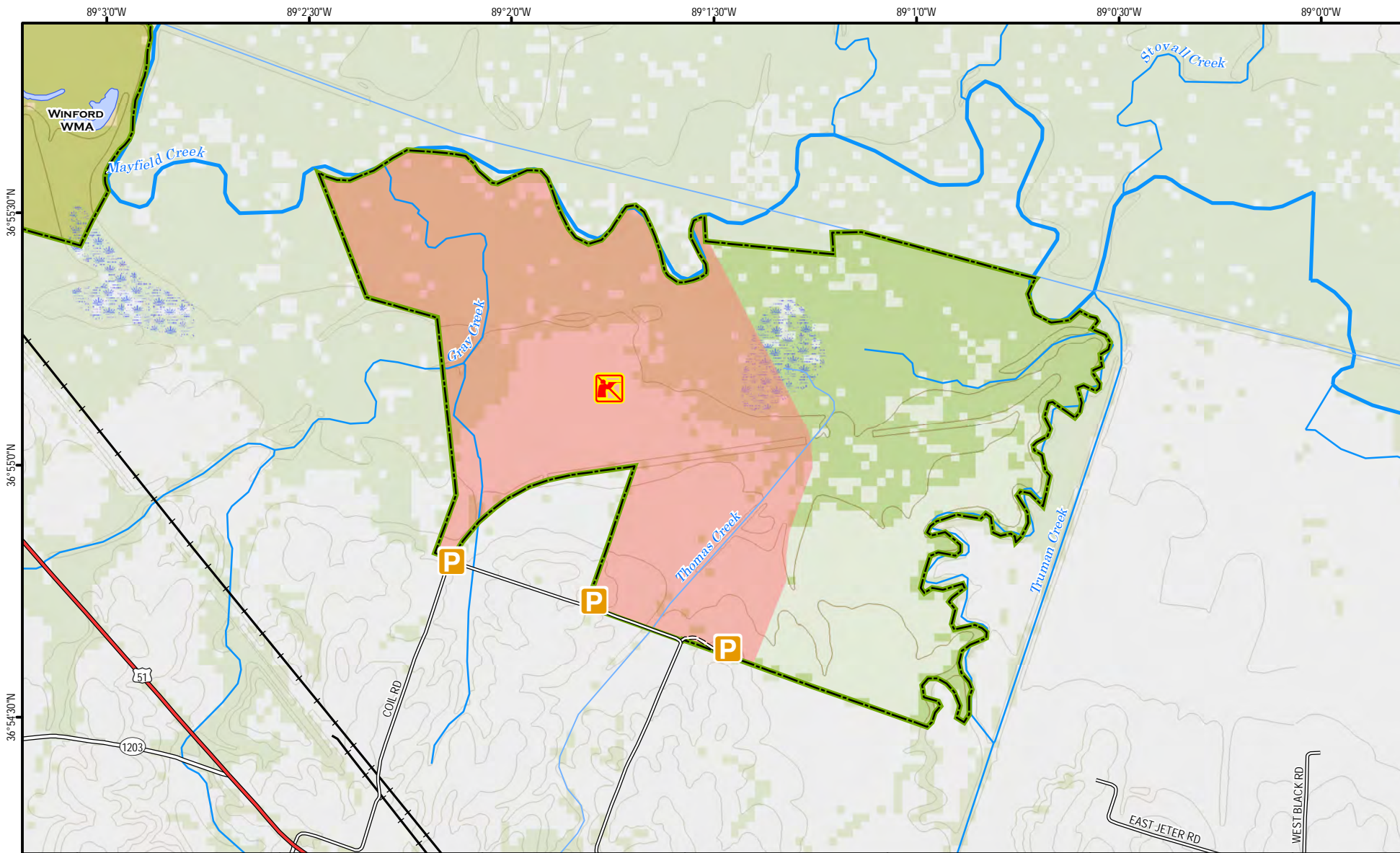
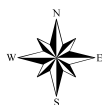


Coil Estate Wildlife Management Area



A map legend and additional information are provided on PDF pages that accompany this map.

Publication Date: 06/03/2010



0 0.1 0.2 0.3 0.4 0.5 Mile



Scale 1:20,000

Contour interval: 10 feet



Note to Map Users

Map prepared by Kentucky Department of Fish & Wildlife Resources (KDFWR). Although KDFWR strives for accuracy, data used to create this map are from a variety of sources and dates; as such, KDFWR makes no representations regarding the accuracy or fitness for use of the information furnished herein.

Coil Estate WMA Information

Public Hunting Area Location



Regional Locator



WMA Overview

Location & Size: Carlisle County, 795 acres

Contact (270) 224-2244

Elevation minimum 310 feet, maximum 320 feet.

Area Habitat mostly wetland: open land 42%, forest 15%, wetland 43%, open water 0%.

Directions & Description: 5 miles northwest of Bardwell on Coil Road just off of HWY 62. From Paducah: take US 60 west to Wickliffe, then go southeast on US 51/62. Go North on Coil Road. The

WMA is on the North side of Coil Road. From Mayfield: take KY 121 northwest to US 62, then continue on 62 to the west. At Bardwell, turn right onto US 51/62 and go northwest for about 3 miles. Turn right on Coil Road. The WMA is on the North Side of Coil Rd.

The 795-acre area is primarily open cropland and bottomland hardwoods. Access is by foot travel only. Hunting is permitted on the eastern 360 acres of the area under statewide regulations. The Western 435 acres of the area are closed to all hunting but are open to public access, hiking and wildlife viewing. Please check the website or the 2009-10 hunting guide for more information. Coil Estate WMA is owned by the Kentucky Department of Fish and Wildlife Resources.

For more online information about this public hunting area [click here](#).

Online Resources

Public Hunting Area users must abide by the Kentucky hunting, trapping, and fishing regulations. It is incumbent on persons using Public Hunting Areas to become familiar with these regulations. Kentucky Department of Fish & Wildlife Resources provides these regulations on our Web site at fw.ky.gov or by calling 1-800-858-1549. If you are viewing this as a PDF, clicking on the links below will direct your browser to our regulations and maps.

Guides and Publications

- Hunting and Trapping
- Spring Turkey and Squirrel
- Waterfowl
- Dove, Wood Duck, Teal, Woodcock, Snipe, and Crow
- ADA Accessible Hunting Sites
- A Guide to Wildlife Management Areas in Kentucky
- Fishing and Boating Guide

Maps and Geographic Information



- [Game Zone – Seasons Maps](#)
- [Wildlife Management Areas/Public Hunting Areas](#)
- [Other KDFWR Maps](#)
- [A Guide to Public Hunting Areas in Kentucky](#)
- [Google Maps – Statewide Public Hunting Area Locations](#)
- [Google Earth Files for Public Hunting Areas, boating and fishing access locations](#)
- [GPS Files for Public Hunting Areas, boating and fishing access locations](#)
- [Interactive Hunting and Fishing Areas Mapper](#)

Wildlife Management Area Map Notes & Legend

NOTE TO MAP USERS:

For most WMA maps the landscape is depicted using a combination of elevation contours, hillshading and a green tint indicating woodland areas that is derived from satellite imagery. On WMAs that are relatively small or have a history of surface mining aerial photography is used.

WMA Map Legend

| | | | | | |
|-------------------------------------------------------------------------------------|---------------------------------|-------------------------------------------------------------------------------------|--------------------------------|---------------------------------------------------------------------------------------|--------------------------|
|  | WMA Office |  | WMA Boundary |  | Populated Place |
|  | Information Kiosk |  | Aerial photograph |  | Kentucky Boundary |
|  | Check station |  | Other Public Hunting Areas |  | Interstate Highway |
|  | Mobility-impaired Hunting Blind |  | Elk Hunting Units |  | Kentucky Parkway |
|  | Trailhead |  | Area Off Limits |  | U.S. Highway |
|  | Horseback Trailhead |  | No Hunting |  | State Highway |
|  | Parking Lot |  | Seasonally Restricted Access * |  | Local Road |
|  | Picnic Area |  | Mobility Impaired Hunting Area |  | Forest Service Road |
|  | Restrooms |  | Primitive Hunting Only |  | Active Railroad |
|  | Wildlife Viewing Site |  | Foot Traffic Only |  | Abandoned Railroad |
|  | Interpretive Site |  | Open Water |  | Federal Recreation Trail |
|  | Retriever Training Site |  | Wetland |  | State Park Trail |
|  | Gate |  | Woodland |  | WMA Road |
|  | Campground | | |  | WMA Foot Trail |
|  | Cemetery | | |  | WMA Horse Trail |
|  | Corps of Engineers Office | | |  | Gas Pipeline |
|  | Waterfowl Blind | | |  | Powerline |
|  | Shooting Range | | |  | Rivers and Streams |
|  | Established Bank Access | | |  | Dam |
|  | Fishing Pier | | |  | Trout Waters |
|  | Carrydown Launch | | |  | Elevation Contour |
|  | Small Boat Ramp | | | | |
|  | Large Boat Ramp | | | | |
|  | State Park Office | | | | |