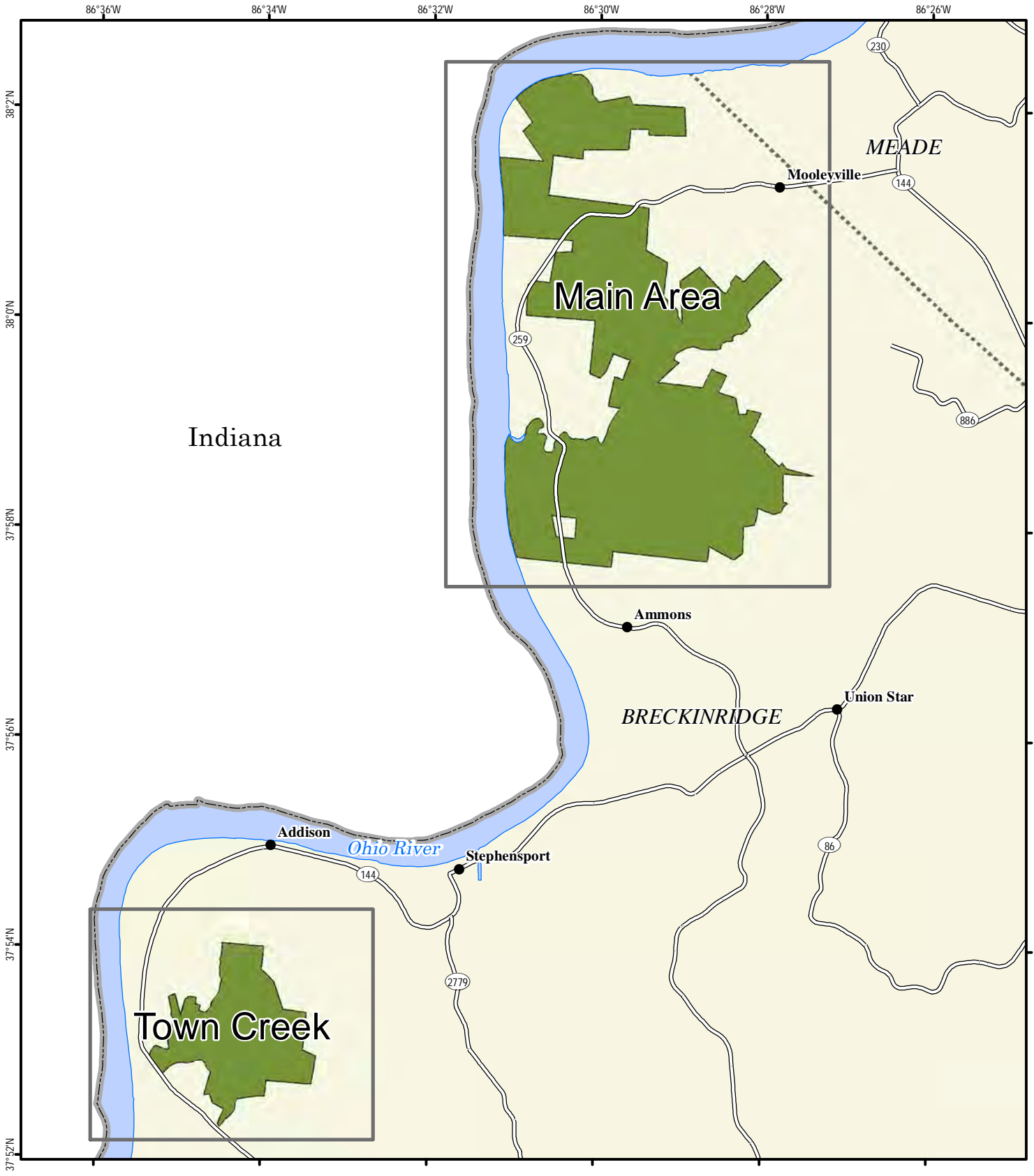


Yellowbank Wildlife Management Area Index Map



A map legend and additional information are provided on PDF pages that accompany this map.



0 1 2 3 Mile

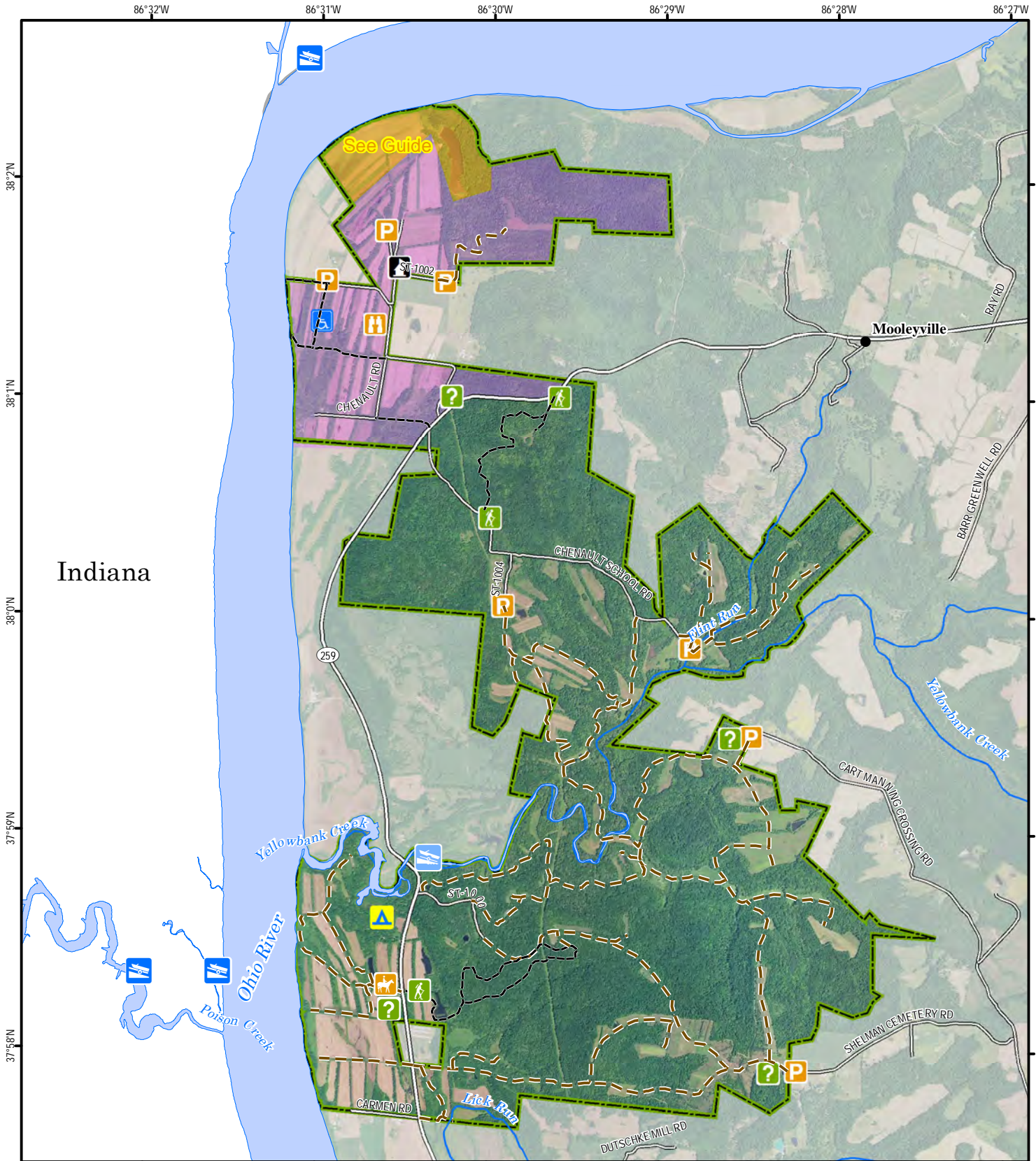
Scale 1:93,000

Publication Date: 11/18/2016



Note to Map Users

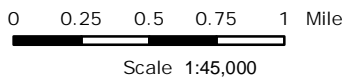
Map prepared by Kentucky Department of Fish & Wildlife Resources (KDFWR). Although KDFWR strives for accuracy, data used to create this map are from a variety of sources and dates; as such, KDFWR makes no representations regarding the accuracy or fitness for use of the information furnished herein.



See adjoining Town Creek map

A map legend and additional information are provided on PDF pages that accompany this map.

Publication Date: 11/18/2016
Imagery from Farm Service Agency 2016



Note to Map Users

Map prepared by Kentucky Department of Fish & Wildlife Resources (KDFWR). Although KDFWR strives for accuracy, data used to create this map are from a variety of sources and dates; as such, KDFWR makes no representations regarding the accuracy or fitness for use of the information furnished herein.



Yellowbank Wildlife Management Area Town Creek



86°37'W

86°36'W

86°35'W

86°34'W

86°33'W

86°32'W

37°55'N

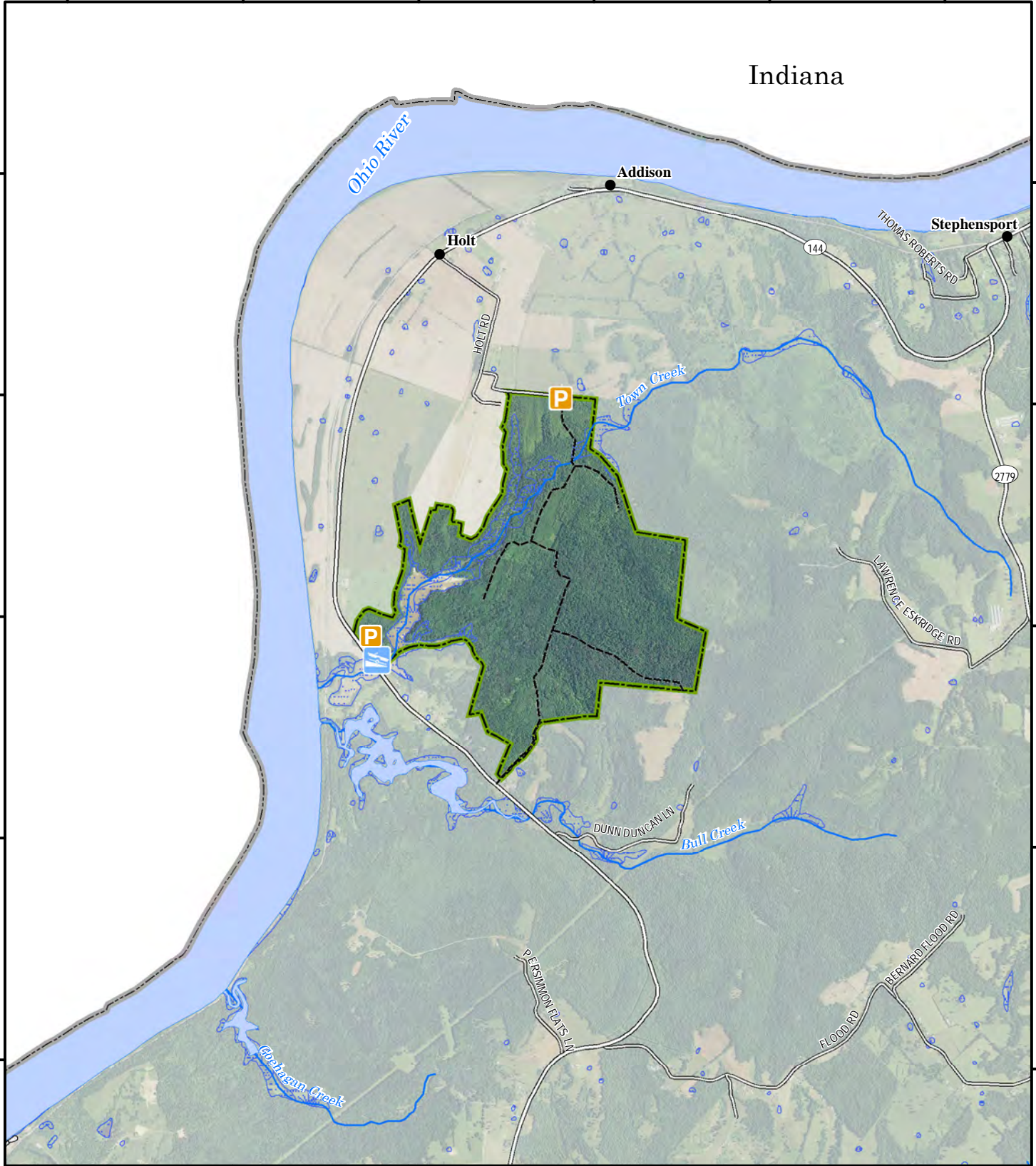
37°54'N

37°53'N

37°52'N

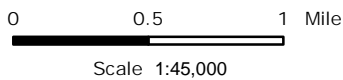
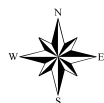
37°51'N

Indiana



A map legend and additional information are provided on PDF pages that accompany this map.

Publication Date: 11/18/2016
Imagery from Farm Service Agency 2016



Note to Map Users

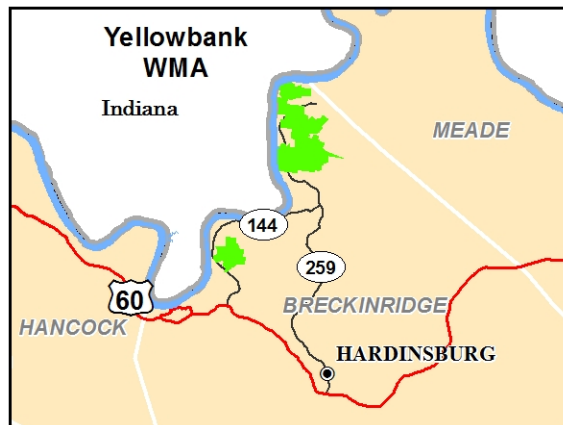
Map prepared by Kentucky Department of Fish & Wildlife Resources (KDFWR). Although KDFWR strives for accuracy, data used to create this map are from a variety of sources and dates; as such, KDFWR makes no representations regarding the accuracy or fitness for use of the information furnished herein.

Yellowbank WMA Information

Public Hunting Area Location



Regional Locator



Directions & Description: Consists of 2 separate tracts, the Main Area and Town Creek Tract both in Breckinridge County.

Main Area: Near Ohio River and Meade County line; 20 miles north of Hardinsburg on KY 259; 20 miles west of Brandenburg off KY 144 to KY 259. Horseback riding allowed only on roads and trails (25 miles) indicated by signs. No off-road/field/woods horse use. Horseback parking area located next to information station. Hiking trails (0.6 miles, 2.5 miles loops) across from information station on KY 259 and a 1.2-mile loop trail accessed from center of WMA. Self-guided demonstration area features habitat types, prairie grasses, wetlands. A 20-stop archery trail (¾ mile loop) located at the end of campground is open to public. No broad head use allowed while target shooting, field tips only; all targets are off to the right of the trail for safe walking. Fishing in area ponds and on Yellowbank Creek, ramp at creek, providing access to Ohio River. Area north of KY 259 is a designated Mobility Impaired Area and signed portions are closed Oct. 15-March 15 as a Waterfowl refuge. Primitive camping on designated site only - primitive rest rooms in camp ground.

Town Creek Tract, Near Addison and Ohio River; 14 miles NW of Hardinsburg on KY 60 to KY 144; 2 miles west of Addison on KY 144 to Holt RD. Access/ Parking area on KY 144 near Town Creek Bridge and Holt RD. Foot Travel Only. Fishing and Hunting allowed in Town Creek Embayment except for Private Property surrounding the eastern portion of the bay. Visitors must observe posted signs at access/ parking areas.

Owned by Kentucky Department of Fish and Wildlife Resources and Breckinridge County Fiscal Court. Portions purchased with funds from the Heritage Lands Conservation Fund Board.

Online Resources

Public Hunting Area users must abide by the Kentucky hunting, trapping, and fishing regulations. It is incumbent on persons using Public Hunting Areas to become familiar with these regulations. Kentucky Department of Fish & Wildlife Resources provides these regulations on our Web site at fw.ky.gov or by calling 1-800-858-1549.

WMA Overview

Location & Size: Breckinridge County, 6,775 acres.

Contact: (270) 547-6856

Elevation: minimum 349 feet, maximum 852 feet

Entrance GPS coordinates: Latitude N 38.02653, Longitude W -86.50946


Area Habitat: mostly forest: open land 11%, forest 85%, wetland 3%, open water 1%.

Wildlife Management Area Map Notes & Legend

NOTE TO MAP USERS:

For most WMA maps the landscape is depicted using a combination of elevation contours, hillshading and a green tint indicating woodland areas that is derived from satellite imagery. On WMAs that are relatively small or have a history of surface mining aerial photography is used.

WMA Map Legend

	WMA Office		WMA Boundary		Populated Place
	Information Kiosk		Aerial photograph		Kentucky Boundary
	Check station		Other Public Hunting Areas		Interstate Highway
	Mobility-impaired Hunting Blind		Area Off Limits		Kentucky Parkway
	Trailhead		No Hunting		U.S. Highway
	Horseback Trailhead		Seasonally Restricted Access		State Highway
	Parking Lot		Mobility Impaired Hunting Area		Local Road
	Picnic Area		Primitive Hunting Only		Forest Service Road
	Restrooms		Foot Traffic Only		Active Railroad
	Wildlife Viewing Site		Open Water		Abandoned Railroad
	Interpretive Site		Wetland		Federal Recreation Trail
	Retriever Training Site		Woodland		WMA Road
	Gate				WMA Foot Trail
	Campground				WMA Horse Trail
	Cemetery				Gas Pipeline
	Corps of Engineers Office				Powerline
	Waterfowl Blind				Rivers and Streams
	Shooting Range				Dam
	Established Bank Access				Trout Waters
	Fishing Pier				Elevation Contour
	Carrydown Launch				
	Small Boat Ramp				
	Large Boat Ramp				
	State Park Office				